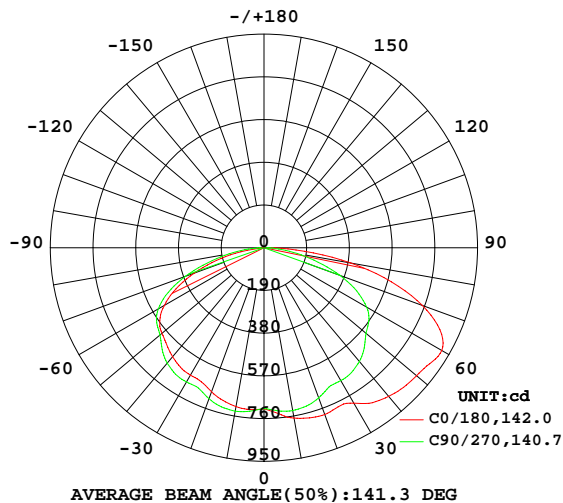


LUMINAIRE PHOTOMETRIC TEST REPORT

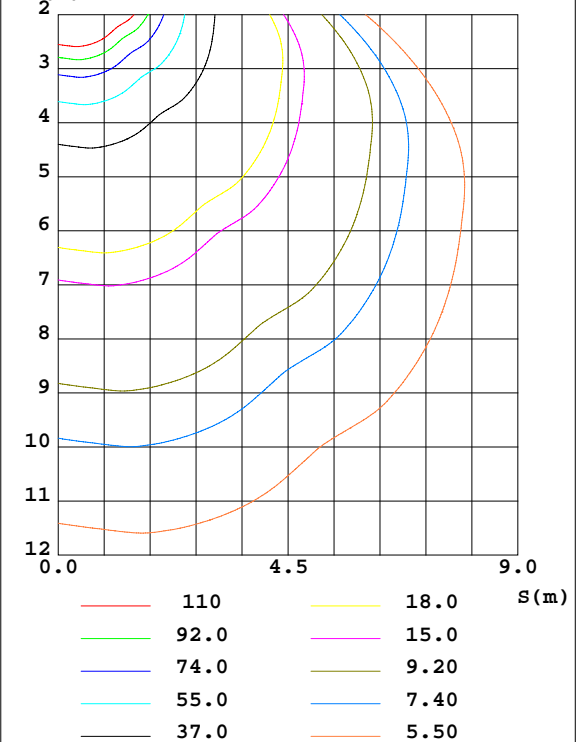
Test:U:229.72V I:0.1760A P:39.278W PF:0.9715 Freq:49.99Hz Lamp Flux:3157.15x1 lm		
NAME:	TYPE:	WEIGHT:
SPEC.:	DIM.: 600*203*10	SERIAL No.:
MFR.: NLE25-034	SUR.:0.58*0.122	Shielding Angle:

DATA OF LAMP		PHOTOMETRIC DATA Eff: 80.38 lm/W			
MODEL		Imax(cd)	913.7	S/MH(C0/180)	1.40
NOMINAL POWER(W)	40	LOR(%)	100.0	S/MH(C90/270)	1.47
RATED VOLTAGE(V)	230.0	TOTAL FLUX(lm)	3157.2	η UP,DN(C0-180)	0.0,56.5
NOMINAL FLUX(lm)	3157.15	CIE CLASS	DIRECT	η UP,DN(C180-360)	0.0,43.5
LAMPS INSIDE	1	η up(%)	0.0	CIBSE SHR NOM	1.50
TEST VOLTAGE(V)	230.0	η down(%)	100.0	CIBSE SHR MAX	1.55

LUMINOUS INTENSITY DISTRIBUTION DIAGRAM



C0 PLANE ISOLUX DIAGRAM (UNIT:lx)



C Range: 0 - 360DEG
C Interval: 90.0DEG
Test Speed: HIGH
Temperature:25.3DEG
Operators:
Test Date:2026-01-17

γ Range: 0 - 90DEG
 γ Interval: 1.0DEG
Test System:EVERFINE GO-2000A_V1 SYSTEM V2.0.406.10
Humidity:65.0%
Test Distance:11.700m [K=1.0000]
Remarks:

ZONAL FLUX DIAGRAM

ZONAL FLUX DIAGRAM:

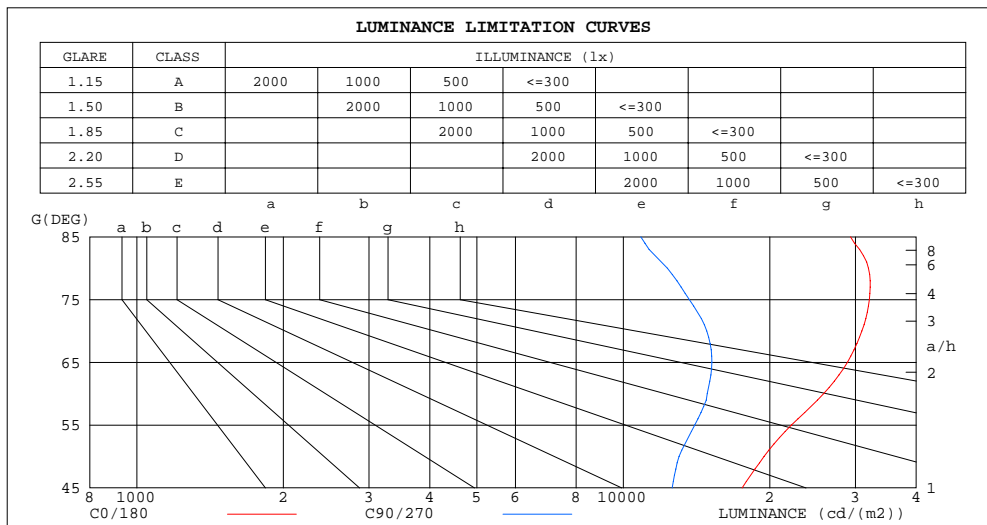
γ	C0	C90	C180	C270					γ	Φ zone	Φ total	%lum, lamp
10	769.1	735.2	717.3	737.8					0- 10	70.06	70.06	2.22,2.22
20	789.2	710.7	682.3	714.7					10- 20	208.2	278.3	8.81,8.81
30	798.4	682.5	654.1	689.1					20- 30	327.4	605.7	19.2,19.2
40	862.8	660.0	632.7	669.8					30- 40	446.5	1052	33.3,33.3
50	885.7	592.0	592.1	603.8					40- 50	533.2	1585	50.2,50.2
60	913.0	526.5	511.0	542.6					50- 60	584.3	2170	68.7,68.7
70	748.7	359.2	329.8	372.3					60- 70	543.8	2713	85.9,85.9
80	391.9	151.3	104.5	158.1					70- 80	346.7	3060	96.9,96.9
90	32.62	11.00	4.991	12.21					80- 90	97.09	3157	100,100
100									90-100			
110									100-110			
120									110-120			
130									120-130			
140									130-140			
150									140-150			
160									150-160			
170									160-170			
180									170-180			
DEG	LUMINOUS INTENSITY:cd									UNIT:lm		

C Range: 0 - 360DEG
 C Interval: 90.0DEG
 Test Speed: HIGH
 Temperature:25.3DEG
 Operators:
 Test Date:2026-01-17

γ Range: 0 - 90DEG
 γ Interval: 1.0DEG
 Test System:EVERFINE GO-2000A_V1 SYSTEM V2.0.406.10
 Humidity:65.0%
 Test Distance:11.700m [K=1.0000]
 Remarks:

LUMINANCE LIMITATION CURVES

Test:U:229.72V I:0.1760A P:39.278W PF:0.9715 Freq:49.99Hz Lamp Flux:3157.15x1 lm		
NAME:	TYPE:	WEIGHT:
SPEC.:	DIM.: 600*203*10	SERIAL No.:
MFR.: NLE25-034	SUR.:0.58*0.122	Shielding Angle:



LUMINANCE cd/(m2)		
G(DEG)	C0/180	C90/270
85	29307	10864
80	31893	12317
75	32042	13670
70	30938	14840
65	28880	15202
60	25806	14881
55	22164	14021
50	19473	13016
45	17541	12598

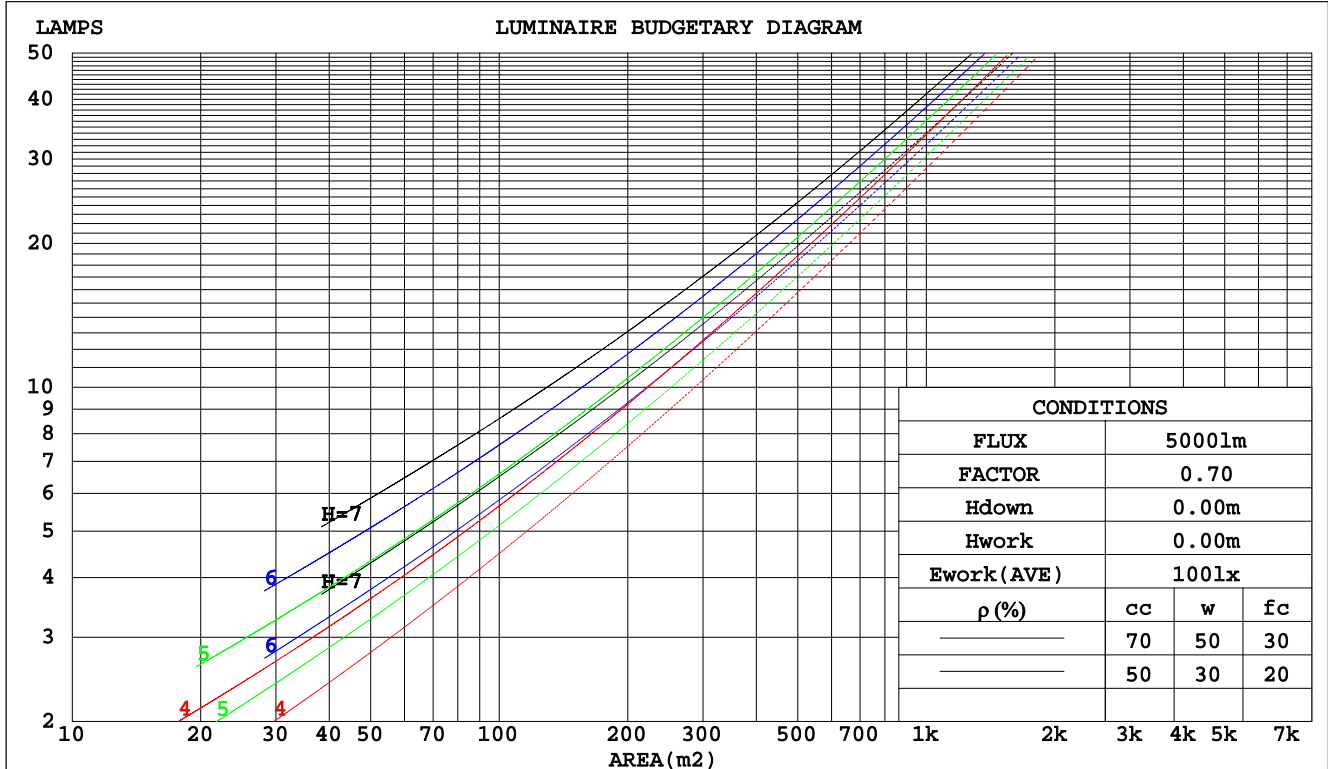
C Range: 0 - 360DEG
C Interval: 90.0DEG
Test Speed: HIGH
Temperature:25.3DEG
Operators:
Test Date:2026-01-17

γ Range: 0 - 90DEG
 γ Interval: 1.0DEG
Test System:EVERFINE GO-2000A_V1 SYSTEM V2.0.406.10
Humidity:65.0%
Test Distance:11.700m [K=1.0000]
Remarks:

CU AND LUMINAIRE BUDGETARY ESTIMATE DIAGRAM

Test:U:229.72V I:0.1760A P:39.278W PF:0.9715 Freq:49.99Hz Lamp Flux:3157.15x1 lm		
NAME:	TYPE:	WEIGHT:
SPEC.:	DIM.: 600*203*10	SERIAL No.:
MFR.: NLE25-034	SUR.:0.58*0.122	Shielding Angle:

pcc	80%			70%			50%			30%			10%			0
pw	50%	30%	10%	50%	30%	10%	50%	30%	10%	50%	30%	10%	50%	30%	10%	0
pfc	20%			20%			20%			20%			20%			0
RCR	RCR:Room Cavity Ratio			Coefficients of Utilization(CU)												
0.0	1.19	1.19	1.19	1.16	1.16	1.16	1.11	1.11	1.11	1.06	1.06	1.06	1.02	1.02	1.02	1.00
1.0	1.01	.96	.92	.99	.94	.90	.95	.91	.87	.91	.87	.85	.87	.84	.82	.80
2.0	.86	.78	.72	.84	.77	.71	.80	.74	.69	.77	.72	.67	.74	.70	.66	.64
3.0	.74	.65	.57	.72	.64	.57	.69	.62	.56	.66	.60	.55	.64	.58	.54	.51
4.0	.65	.55	.47	.63	.54	.47	.61	.53	.46	.58	.51	.45	.56	.50	.45	.42
5.0	.57	.47	.40	.56	.46	.39	.53	.45	.39	.51	.44	.38	.49	.43	.38	.36
6.0	.51	.41	.34	.50	.40	.34	.48	.40	.33	.46	.39	.33	.44	.38	.33	.30
7.0	.46	.36	.29	.45	.36	.29	.43	.35	.29	.42	.34	.29	.40	.34	.28	.26
8.0	.41	.32	.26	.41	.32	.26	.39	.31	.25	.38	.31	.25	.37	.30	.25	.23
9.0	.38	.29	.23	.37	.29	.23	.36	.28	.23	.35	.28	.23	.34	.27	.22	.20
10.0	.35	.26	.21	.34	.26	.20	.33	.25	.20	.32	.25	.20	.31	.25	.20	.18



C Range: 0 - 360DEG
C Interval: 90.0DEG
Test Speed: HIGH
Temperature:25.3DEG
Operators:
Test Date:2026-01-17

γ Range: 0 - 90DEG
γ Interval: 1.0DEG
Test System:EVERFINE GO-2000A_V1 SYSTEM V2.0.406.10
Humidity:65.0%
Test Distance:11.700m [K=1.0000]
Remarks:

WEC AND CCEC

Test:U:229.72V I:0.1760A P:39.278W PF:0.9715 Freq:49.99Hz Lamp Flux:3157.15x1 lm		
NAME:	TYPE:	WEIGHT:
SPEC.:	DIM.: 600*203*10	SERIAL No.:
MFR.: NLE25-034	SUR.:0.58*0.122	Shielding Angle:

pcc	80%			70%			50%			30%			10%			0	
pw	50%	30%	10%	50%	30%	10%	50%	30%	10%	50%	30%	10%	50%	30%	10%	0	
pfc	20%			20%			20%			20%			20%			0	
RCR	RCR:Room Cavity Ratio						Wall Exitance Coefficients(WEC)										
0.0																	
1.0	.361	.205	.065	.353	.202	.064	.340	.195	.062	.327	.189	.061	.316	.183	.059		
2.0	.333	.183	.056	.327	.180	.055	.315	.175	.054	.304	.170	.053	.293	.166	.052		
3.0	.304	.162	.048	.298	.160	.048	.287	.156	.047	.277	.152	.047	.268	.148	.046		
4.0	.277	.144	.042	.272	.142	.042	.262	.139	.041	.253	.136	.041	.245	.133	.041		
5.0	.253	.129	.037	.248	.128	.037	.240	.125	.037	.232	.122	.036	.225	.120	.036		
6.0	.232	.116	.033	.228	.115	.033	.221	.113	.033	.214	.111	.033	.207	.109	.032		
7.0	.214	.106	.030	.211	.105	.030	.204	.103	.030	.198	.101	.030	.192	.100	.029		
8.0	.199	.097	.027	.196	.096	.027	.190	.095	.027	.184	.093	.027	.179	.092	.027		
9.0	.185	.090	.025	.182	.089	.025	.177	.088	.025	.172	.086	.025	.167	.085	.025		
10.0	.173	.083	.023	.171	.082	.023	.166	.081	.023	.161	.080	.023	.157	.079	.023		

pcc	80%			70%			50%			30%			10%			0
pw	50%	30%	10%	50%	30%	10%	50%	30%	10%	50%	30%	10%	50%	30%	10%	0
pfc	20%			20%			20%			20%			20%			0
RCR	RCR:Room Cavity Ratio						Ceiling Cavity Exitance Coefficients(CCEC)									
0.0	.190	.190	.190	.163	.163	.163	.111	.111	.111	.064	.064	.064	.020	.020	.020	
1.0	.184	.156	.130	.157	.134	.112	.108	.092	.078	.062	.053	.045	.020	.017	.015	
2.0	.178	.132	.093	.152	.113	.080	.104	.078	.056	.060	.046	.033	.019	.015	.011	
3.0	.171	.115	.070	.147	.099	.060	.101	.069	.042	.058	.040	.025	.019	.013	.008	
4.0	.164	.102	.054	.140	.088	.047	.097	.061	.033	.056	.036	.020	.018	.012	.006	
5.0	.156	.091	.044	.134	.079	.038	.092	.055	.027	.053	.032	.016	.017	.011	.005	
6.0	.149	.083	.036	.128	.072	.032	.088	.050	.022	.051	.030	.013	.016	.010	.004	
7.0	.141	.076	.031	.122	.066	.027	.084	.046	.019	.049	.027	.011	.016	.009	.004	
8.0	.134	.071	.027	.116	.061	.024	.080	.043	.017	.047	.025	.010	.015	.008	.003	
9.0	.128	.066	.024	.110	.057	.021	.076	.040	.015	.044	.024	.009	.014	.008	.003	
10.0	.122	.061	.021	.105	.053	.019	.073	.038	.013	.042	.022	.008	.014	.007	.003	

C Range: 0 - 360DEG
C Interval: 90.0DEG
Test Speed: HIGH
Temperature:25.3DEG
Operators:
Test Date:2026-01-17

γ Range: 0 - 90DEG
γ Interval: 1.0DEG
Test System:EVERFINE GO-2000A_V1 SYSTEM V2.0.406.10
Humidity:65.0%
Test Distance:11.700m [K=1.0000]
Remarks:

UGR(Unified Glare Rating) Table

Test:U:229.72V I:0.1760A P:39.278W PF:0.9715 Freq:49.99Hz Lamp Flux:3157.15x1 lm											
NAME:			TYPE:			WEIGHT:					
SPEC.:			DIM.: 600*203*10			SERIAL No.:					
MFR.: NLE25-034			SUR.:0.58*0.122			Shielding Angle:					
ceiling/cavity	0.7	0.7	0.5	0.5	0.3	0.7	0.7	0.5	0.5	0.3	
walls	0.5	0.3	0.5	0.3	0.3	0.5	0.3	0.5	0.3	0.3	
working plane	0.2	0.2	0.2	0.2	0.2	0.2	0.2	0.2	0.2	0.2	
Room dimensions		Viewed crosswise				Viewed endwise					
x = 2H y = 2H	2H	25.1	26.7	25.3	26.9	27.2	23.0	24.7	23.3	24.9	25.1
	3H	27.8	29.4	28.1	29.6	29.9	24.9	26.5	25.2	26.7	27.0
	4H	29.0	30.5	29.3	30.7	31.0	25.6	27.1	26.0	27.4	27.7
	6H	29.9	31.3	30.2	31.6	31.9	26.1	27.5	26.5	27.8	28.1
	8H	30.2	31.6	30.5	31.9	32.2	26.3	27.6	26.6	27.9	28.2
	12H	30.4	31.7	30.8	32.0	32.3	26.3	27.6	26.7	27.9	28.3
4H	2H	25.7	27.2	26.1	27.5	27.8	24.3	25.8	24.6	26.0	26.3
	3H	28.6	29.9	29.0	30.2	30.5	26.4	27.7	26.7	28.0	28.3
	4H	29.9	31.1	30.3	31.4	31.8	27.2	28.4	27.6	28.7	29.1
	6H	30.9	32.0	31.4	32.4	32.8	27.8	28.9	28.2	29.2	29.6
	8H	31.3	32.4	31.8	32.7	33.1	28.0	29.0	28.4	29.3	29.7
	12H	31.6	32.6	32.1	32.9	33.4	28.1	29.0	28.5	29.4	29.8
8H	4H	30.1	31.2	30.6	31.5	31.9	27.9	28.9	28.3	29.2	29.6
	6H	31.4	32.2	31.8	32.6	33.1	28.7	29.5	29.1	29.9	30.3
	8H	31.9	32.6	32.3	33.1	33.5	28.9	29.7	29.4	30.1	30.6
	12H	32.3	32.9	32.8	33.4	33.9	29.1	29.8	29.6	30.2	30.7
12H	4H	30.2	31.1	30.6	31.5	31.9	28.0	28.9	28.4	29.3	29.7
	6H	31.4	32.2	31.9	32.6	33.1	28.8	29.6	29.3	30.0	30.5
	8H	32.0	32.6	32.5	33.1	33.6	29.2	29.8	29.7	30.3	30.8
Variations with the observer position at spacings:											
S = 1.0H	+ 0.1 / - 0.1					+ 0.1 / - 0.2					
1.5H	+ 0.1 / - 0.1					+ 0.2 / - 0.3					
2.0H	+ 0.2 / - 0.3					+ 0.3 / - 0.6					

CIE Pub.117, 3157 lm Total Lamp Luminous Flux Corrected ($8\log(F/F_0) = 4.0$)

C Range: 0 - 360DEG
C Interval: 90.0DEG
Test Speed: HIGH
Temperature:25.3DEG
Operators:
Test Date:2026-01-17

γ Range: 0 - 90DEG
 γ Interval: 1.0DEG
Test System:EVERFINE GO-2000A_V1 SYSTEM V2.0.406.10
Humidity:65.0%
Test Distance:11.700m [K=1.0000]
Remarks:

UTILIZATION FACTORS TABLE

Test:U:229.72V I:0.1760A P:39.278W PF:0.9715 Freq:49.99Hz Lamp Flux:3157.15x1 lm		
NAME:	TYPE:	WEIGHT:
SPEC.:	DIM.: 600*203*10	SERIAL No.:
MFR.: NLE25-034	SUR.:0.58*0.122	Shielding Angle:

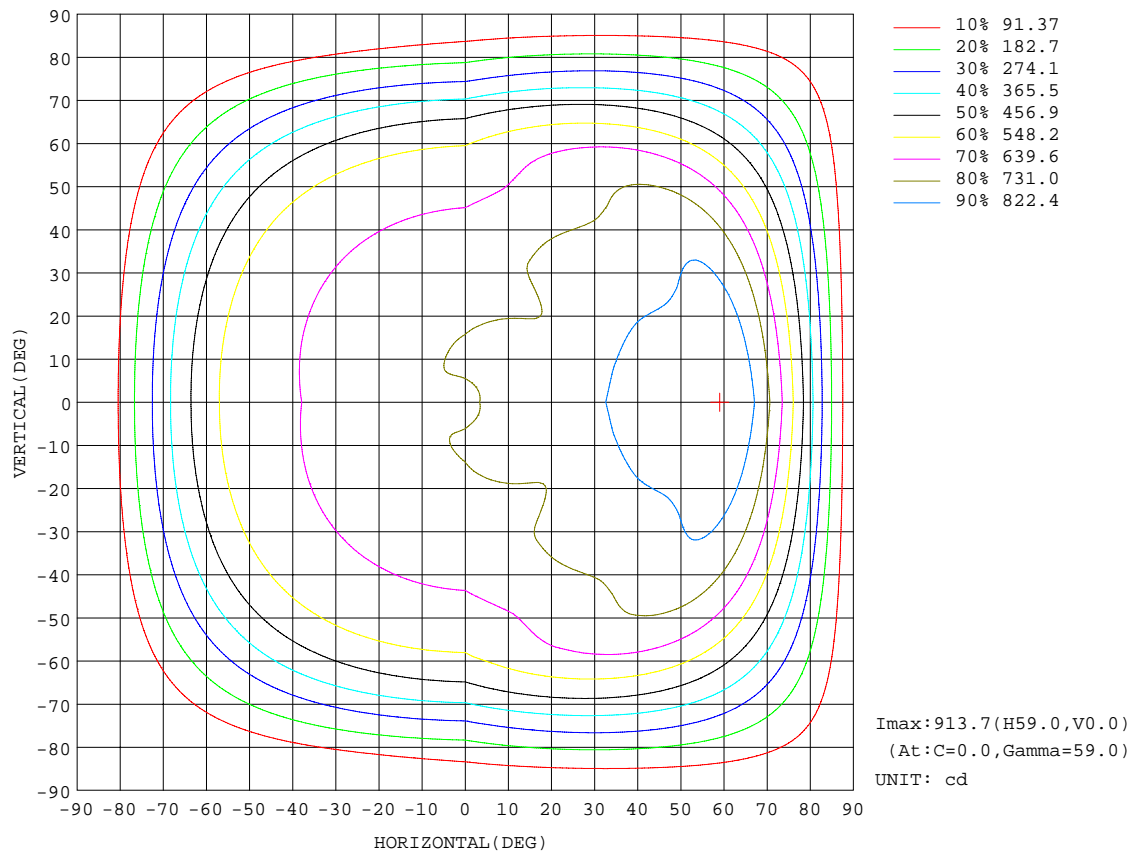
REFLECTANCE										
Ceiling	0.8	0.8	0.8	0.7	0.7	0.7	0.5	0.5	0.5	0
Walls	0.7	0.5	0.3	0.7	0.5	0.3	0.7	0.5	0.3	0
Working plane	0.2	0.2	0.2	0.2	0.2	0.2	0.2	0.2	0.2	0
ROOM INDEX	UTILIZATION FACTORS(PERCENT) $k(RI) \times RCR = 5$									
k = 0.60	51	39	31	50	38	31	49	38	31	24
0.80	61	48	40	60	48	40	58	47	39	32
1.00	70	57	49	68	56	49	66	58	48	40
1.25	77	65	57	76	64	56	73	63	56	47
1.50	83	71	63	81	70	63	78	68	62	53
2.00	90	80	73	88	79	72	85	77	71	62
2.50	95	86	79	93	85	78	89	82	76	67
3.00	99	91	84	97	89	83	92	86	81	72
4.00	104	97	92	101	95	90	97	92	88	78
5.00	107	101	96	104	99	95	99	95	92	82
ROOM INDEX	UF(total)									Direct
According to DIN EN 13032-2 2004			Suspended					SHRNOM = 1.25		

C Range: 0 - 360DEG
C Interval: 90.0DEG
Test Speed: HIGH
Temperature:25.3DEG
Operators:
Test Date:2026-01-17

γ Range: 0 - 90DEG
 γ Interval: 1.0DEG
Test System:EVERFINE GO-2000A_V1 SYSTEM V2.0.406.10
Humidity:65.0%
Test Distance:11.700m [K=1.0000]
Remarks:

ISOCANDELA DIAGRAM

Test:U:229.72V I:0.1760A P:39.278W PF:0.9715 Freq:49.99Hz Lamp Flux:3157.15x1 lm		
NAME:	TYPE:	WEIGHT:
SPEC.:	DIM.: 600*203*10	SERIAL No.:
MFR.: NLE25-034	SUR.:0.58*0.122	Shielding Angle:

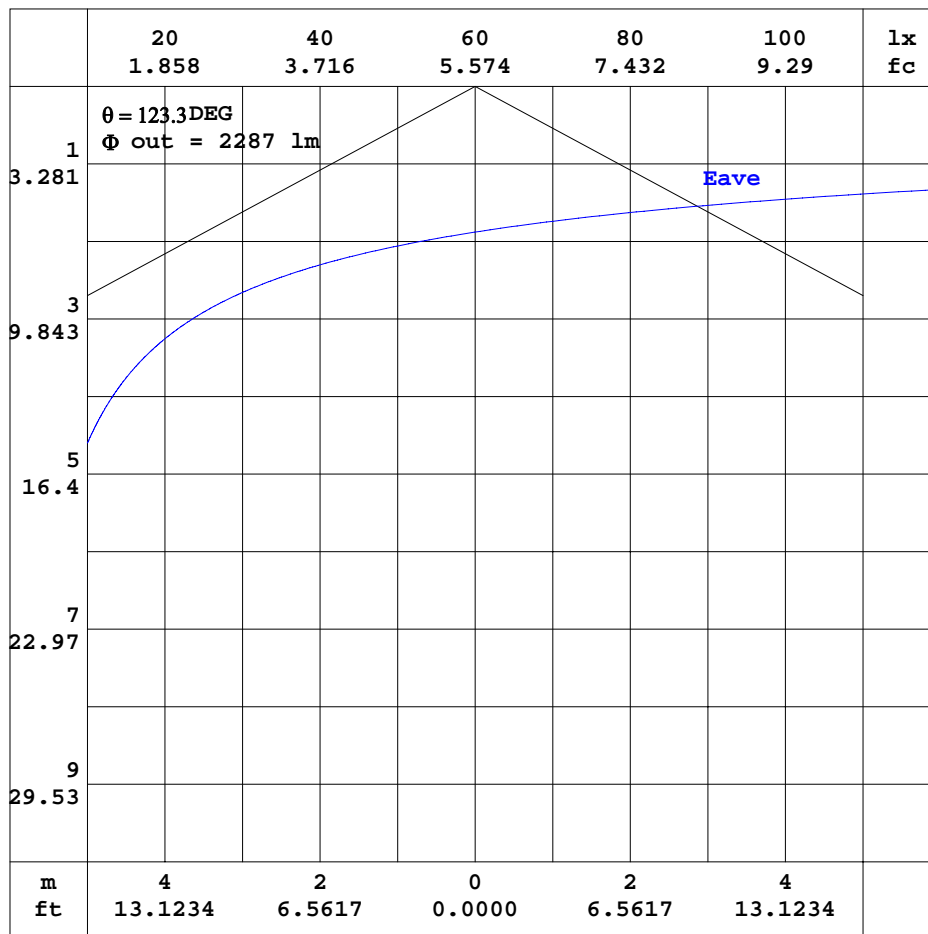


C Range: 0 - 360DEG
C Interval: 90.0DEG
Test Speed: HIGH
Temperature:25.3DEG
Operators:
Test Date:2026-01-17

γ Range: 0 - 90DEG
γ Interval: 1.0DEG
Test System:EVERFINE GO-2000A_V1 SYSTEM V2.0.406.10
Humidity:65.0%
Test Distance:11.700m [K=1.0000]
Remarks:

AAI CURVES

Test:U:229.72V I:0.1760A P:39.278W PF:0.9715 Freq:49.99Hz Lamp Flux:3157.15x1 lm		
NAME:	TYPE:	WEIGHT:
SPEC.:	DIM.: 600*203*10	SERIAL No.:
MFR.: NLE25-034	SUR.:0.58*0.122	Shielding Angle:



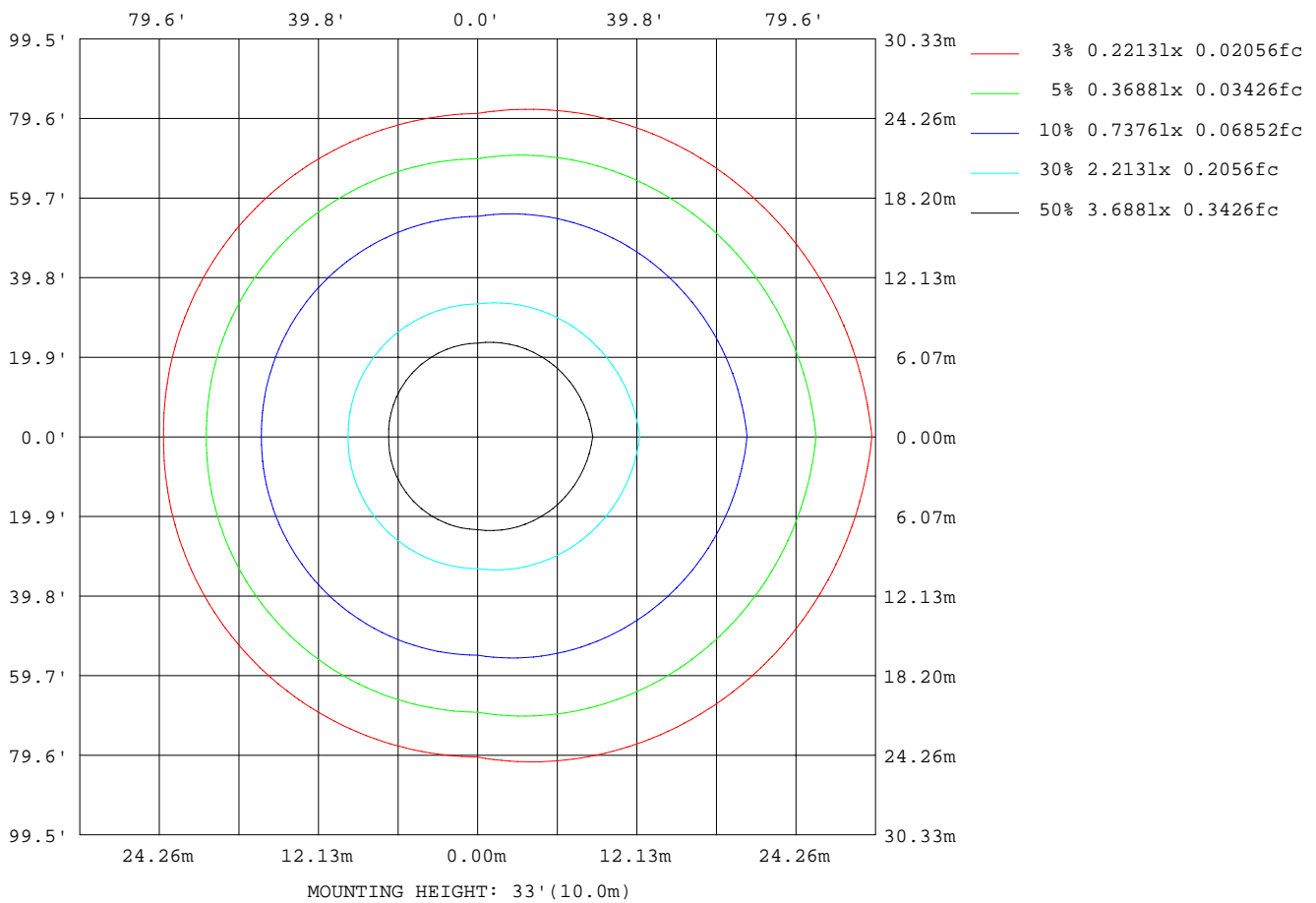
Note: The Curves indicate the illuminated area and the average illumination when the luminaire is at different distance.

C Range: 0 - 360DEG
 C Interval: 90.0DEG
 Test Speed: HIGH
 Temperature: 25.3DEG
 Operators:
 Test Date: 2026-01-17

γ Range: 0 - 90DEG
 γ Interval: 1.0DEG
 Test System: EVERFINE GO-2000A_V1 SYSTEM V2.0.406.10
 Humidity: 65.0%
 Test Distance: 11.700m [K=1.0000]
 Remarks:

ISOLUX DIAGRAM

Test:U:229.72V I:0.1760A P:39.278W PF:0.9715 Freq:49.99Hz Lamp Flux:3157.15x1 lm		
NAME:	TYPE:	WEIGHT:
SPEC.:	DIM.: 600*203*10	SERIAL No.:
MFR.: NLE25-034	SUR.:0.58*0.122	Shielding Angle:



C Range: 0 - 360DEG
C Interval: 90.0DEG
Test Speed: HIGH
Temperature:25.3DEG
Operators:
Test Date:2026-01-17

γ Range: 0 - 90DEG
 γ Interval: 1.0DEG
Test System:EVERFINE GO-2000A_V1 SYSTEM V2.0.406.10
Humidity:65.0%
Test Distance:11.700m [K=1.0000]
Remarks:

LED Avg.L Report

Test:U:229.72V I:0.1760A P:39.278W PF:0.9715 Freq:49.99Hz Lamp Flux:3157.15x1 lm		
NAME:	TYPE:	WEIGHT:
SPEC.:	DIM.: 600*203*10	SERIAL No.:
MFR.: NLE25-034	SUR.:0.58*0.122	Shielding Angle:

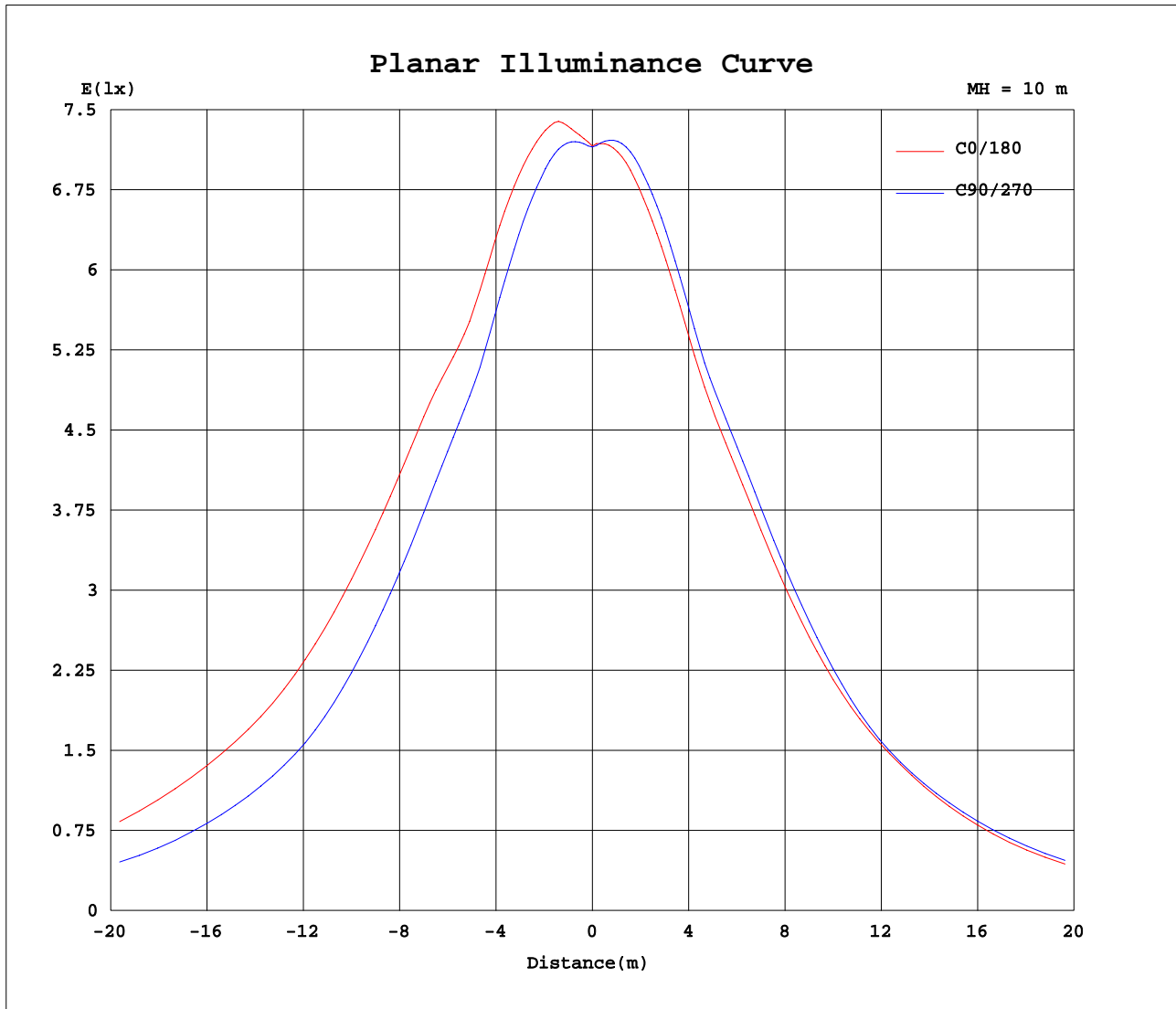
AvgL	cd/m2
L_0~180(65)av	21656
L_0~180(75)av	22011
L_0~180(85)av	15031
L_90~270(65)av	15462
L_90~270(75)av	13897
L_90~270(85)av	11131
L_45(65)av	17334
L_45(75)av	16313
L_45(85)av	11701

Standard: GB/T 29293-2012

C Range: 0 - 360DEG
C Interval: 90.0DEG
Test Speed: HIGH
Temperature:25.3DEG
Operators:
Test Date:2026-01-17

γ Range: 0 - 90DEG
γ Interval: 1.0DEG
Test System:EVERFINE GO-2000A_V1 SYSTEM V2.0.406.10
Humidity:65.0%
Test Distance:11.700m [K=1.0000]
Remarks:

Planar Illuminance Curve



C Range: 0 - 360DEG
C Interval: 90.0DEG
Test Speed: HIGH
Temperature: 25.3DEG
Operators:
Test Date: 2026-01-17

γ Range: 0 - 90DEG
 γ Interval: 1.0DEG
Test System: EVERFINE GO-2000A_V1 SYSTEM V2.0.406.10
Humidity: 65.0%
Test Distance: 11.700m [K=1.0000]
Remarks:

```

γ Range: 0 - 90DEG
γ Interval: 1.0DEG
Test System:EVERFINE GO-2000A_V1 SYSTEM V2.0.406.10
Humidity:65.0%
Test Distance:11.700m [K=1.0000]
Remarks:

```